

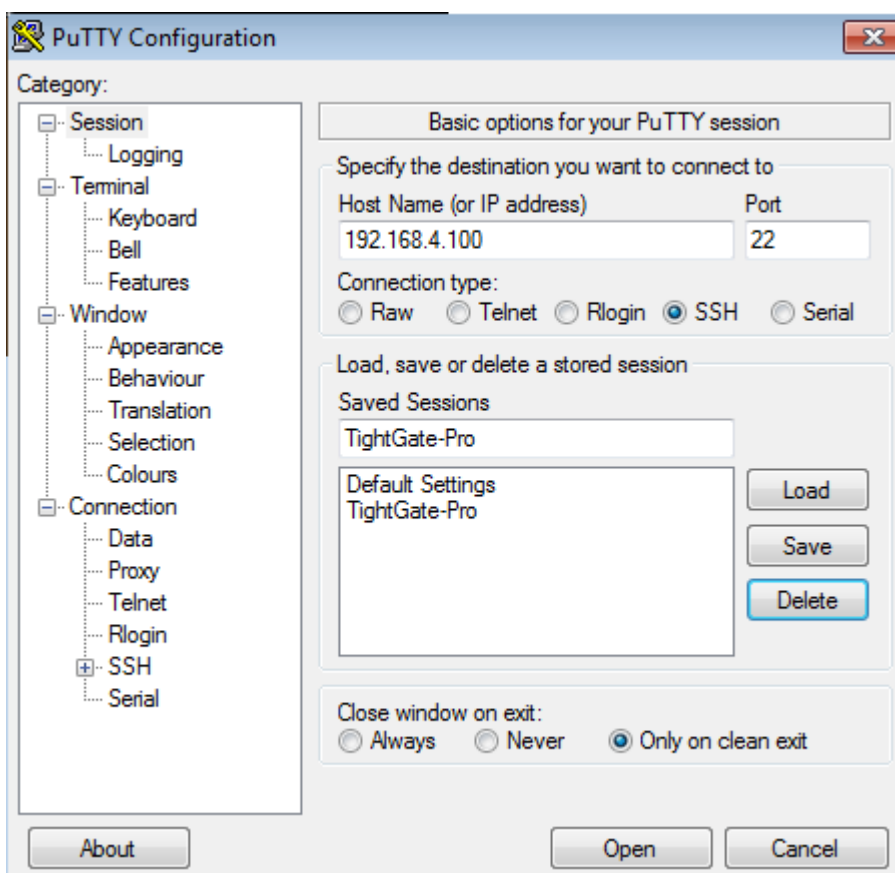
Setting the display of the administration interface of TightGate-Pro in Putty

To ensure that the administration interface of TightGate-Pro is displayed correctly under Putty in the Windows operating system, the display should be customised in Putty.

Note: If you create a session for TightGate-Pro, the settings are not applied globally to all other connections.

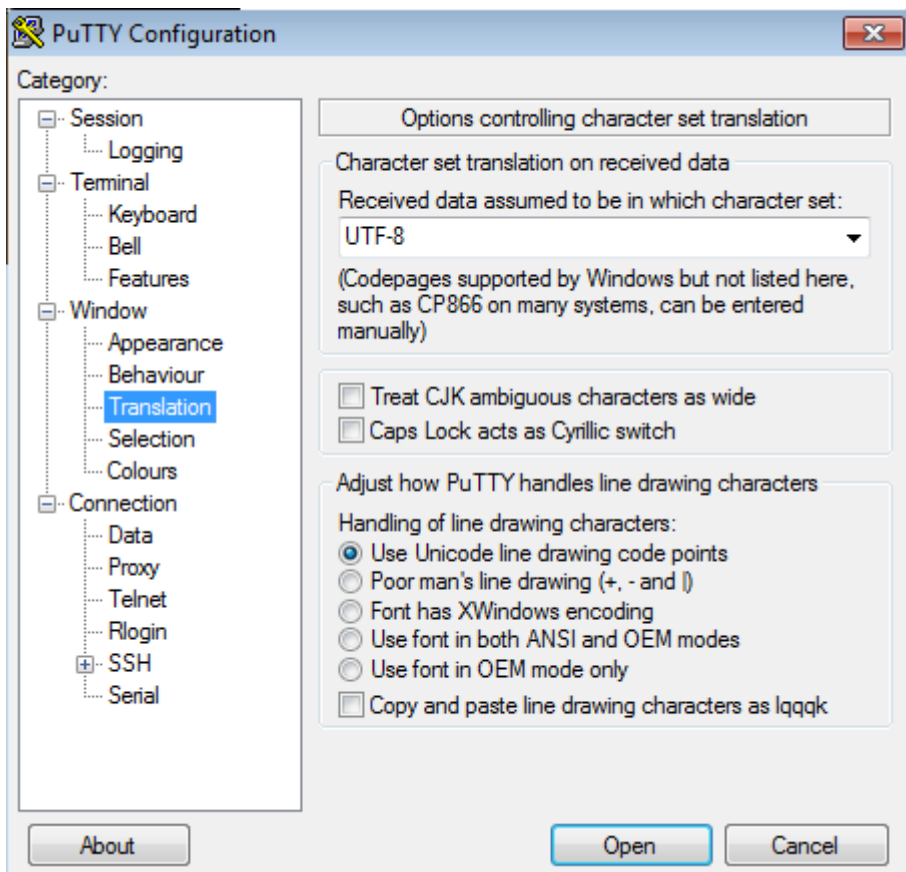
How to set the correct settings for Putty:

- Open Putty.

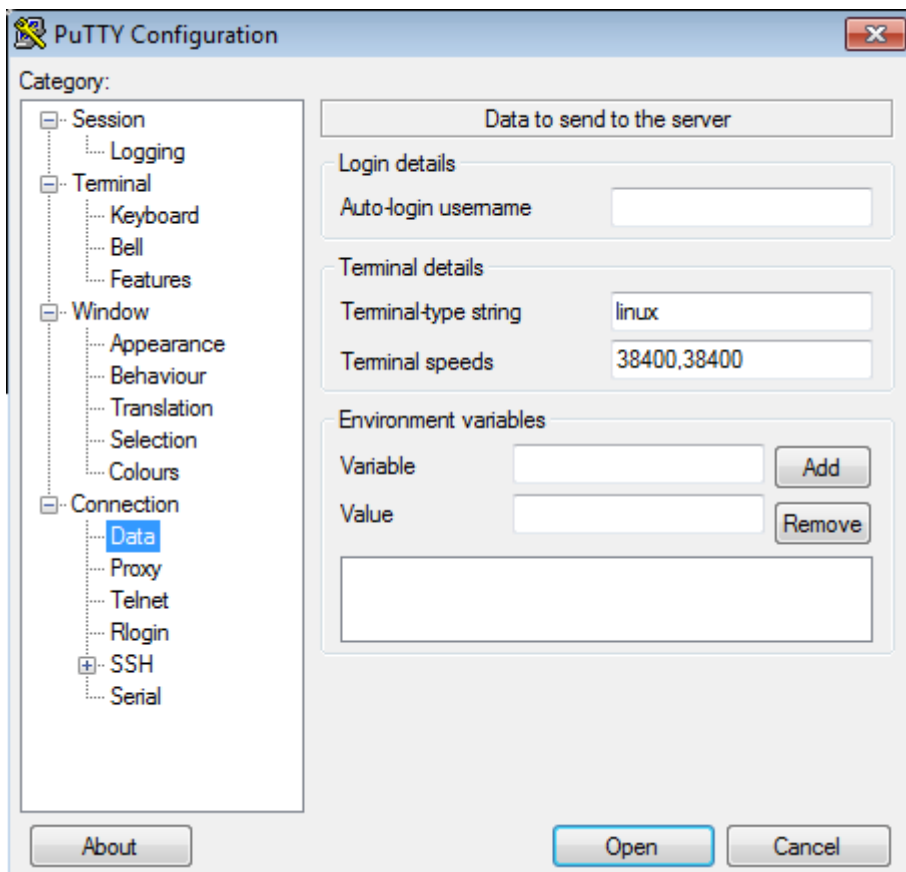


Create a new session "TightGate-Pro" and enter the correct IP address for the connection to the desired TightGate-Pro.

- Switch to the menu item **Translations** menu item under the **Window**.

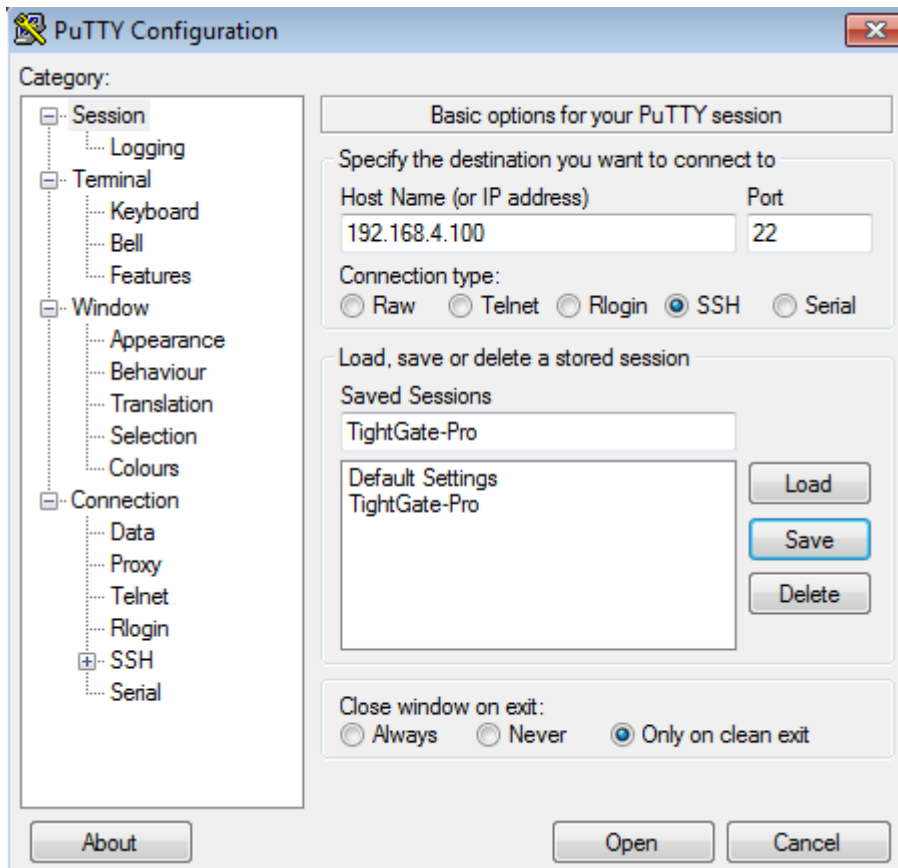


Select the code page **UTF-8** and now switch to the menu item **Data** menu item under the **Connection**.



Please change the entry in the **Terminal-type string** from **xterm** to **linux**.

Then go back to the main menu item **session** and save the settings using the **Save**-button.



Your settings are now saved.

The next time you open the session you have created, the new settings will be active and the administration interface of TightGate-Pro will be displayed correctly.

From:
<https://help.m-privacy.de/> -

Permanent link:
<https://help.m-privacy.de/doku.php/en:faq:putty>

Last update: **2024/01/19 21:55**

